



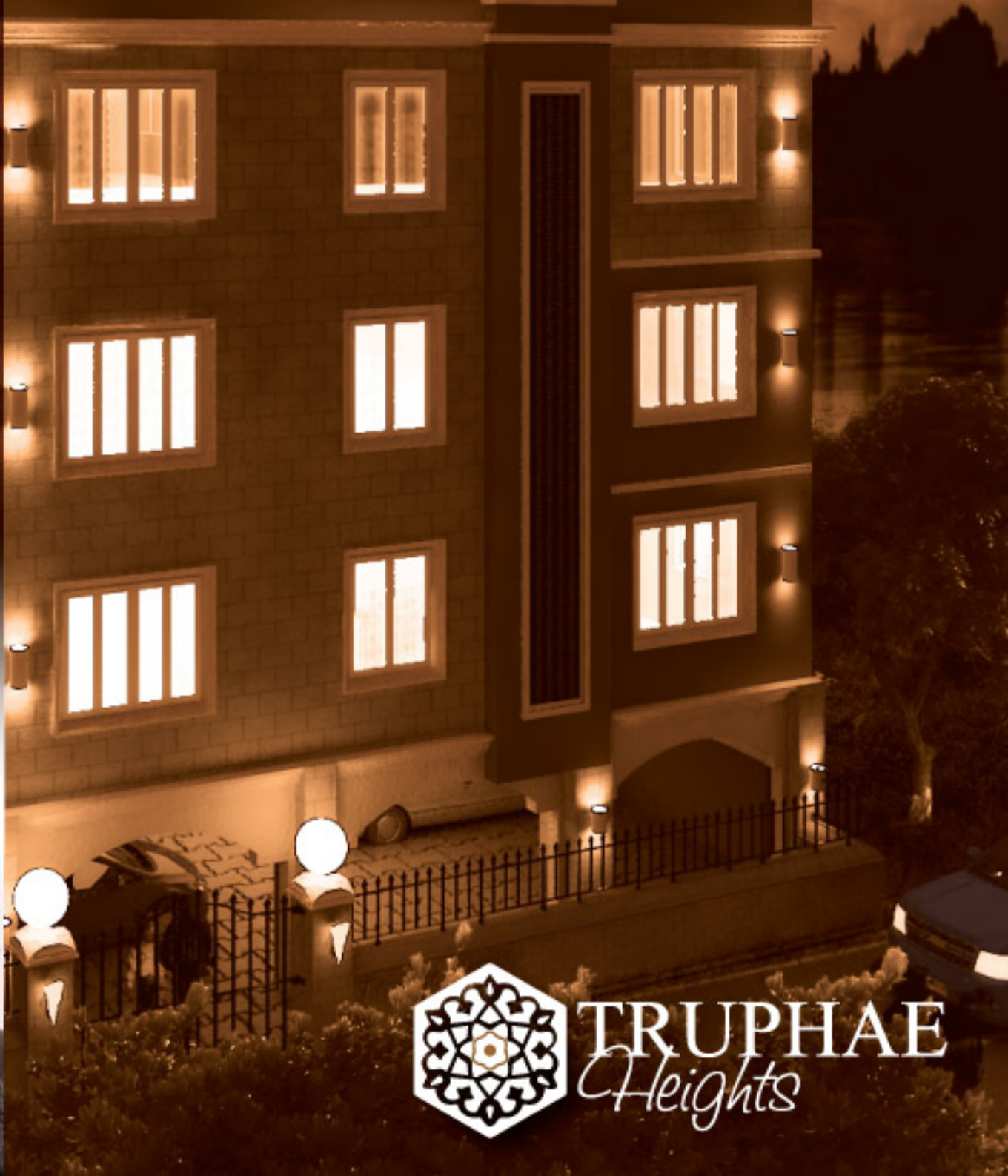
TRUPHAE
Heights

LIVING
IN *Luxury*



Introduction

The apartment is located in nyali Area, beach road Designed as per contemporary standards, this apartment provides a vivacious retreat from mundane living, the apartment is designed with moderate state of art specification and try best to provide the most comfortable living experience to your family.



TRUPHAE
Heights

PRIME Location



Nearby Key facilities

School/College	0.2 km
Bank	2.0 km
Hospital	0.5 km
Market hall	2.0 km

AMENITIES

- Architecturally well developed
- Parking facilities at a cost
- Tiled flooring
- Wardrobes and kitchen cabinets
- Spacious living area
- Upvc windows
- Perimeter wall and security fencing facilities
- 24/7 CCTV and security Guard and maintenance
- Borehole water facilitation

DISCLAIMER

The information has been compiled from the arising price of the data base of properties listed on site for the period. Since the date is not actual of the actual transaction. We the Developers does not give any guaranteed and it should be verified independently.

3D RENDERING

2 Bedroom Apartment

Approx. 1000 SQFT





- Dimensions should not be used for carpet size, appliance space or items of furniture. Purchaserd furniture may be of a different size to that indicated
- Upper floor layout are subjected to continual review for betterment of the project and therefore could change from those shown here
- These elements are for illustrative purposes only. We operate a policy of continuous product development and individual features such as openings and elevation treatments may vary from time to time, as may heating & electrical layouts. Consequently these elements should be treated as general guidance only and cannot be relied upon as accurately describing any of the specified matters prescribed by any order made, nor do they constitute a contract, part of a contract or warranty.
- The name given to the apartments is for marketing purposes only and may not form part of the official postal address.

DISCLAIMER

FLOOR PLAN

2 Bedroom Apartment



3D RENDERING

2 Bedroom Apartment

Approx. 900 SQFT



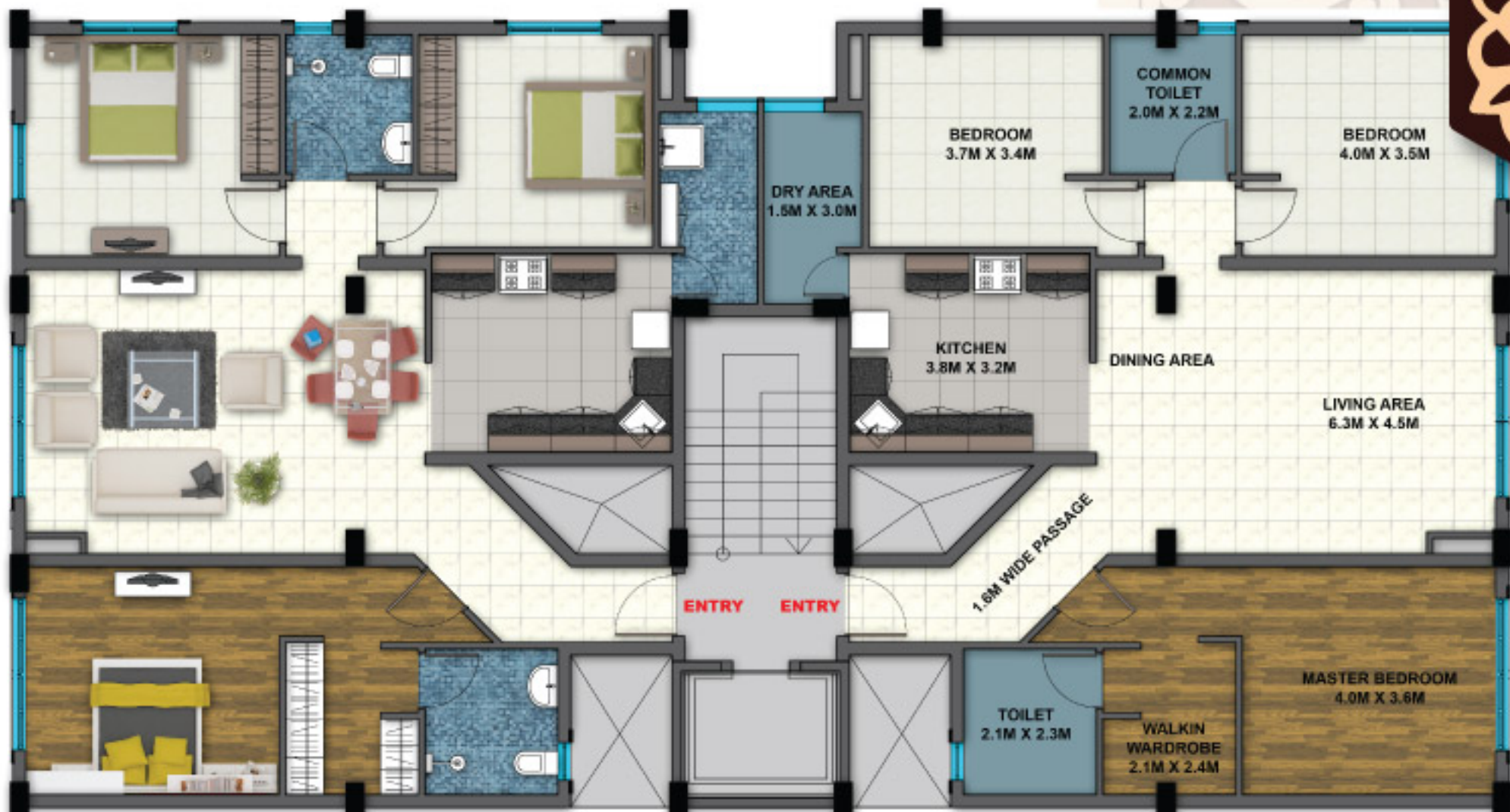


3D RENDERING

3 Bedroom Apartment

Approx. 1350 SQFT





- DISCLAIMER**
- Dimensions should not be used for carpet size, appliance space or items of furniture .Purchaserd furniture may be of a different size to that indicated
 - Upper floor layout are subjected to continual review for betterment of the project and therefore could change from those shown here
 - These elements are for illustrative purposes only. We operate a policy of continuous product development and individual features such as openings and elevation treatments may vary from time to time, as may heating & electrical layouts . Consequently these elements should be treated as general guidance only and cannot be relied upon as accurately describing any of the specified matters prescribed by any order made, nor do they constitute a contract , part of a contract or warranty .
 - The name given to the apartments is for marketing purposes only and may not form part of the official postal address.

FLOOR PLAN

3 Bedroom Apartment



TRUPHAE *Heights*

